



800-255-6213

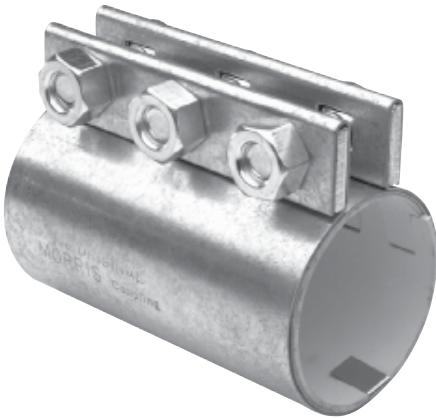
# Compression Couplings for Pipe and Tubing

The Morris Compression tubing and pipe coupling is designed for permanent installation in the joining of either plain end, threaded, grooved or a combination of any of these joints. The band type construction holds the entire surface of the joint in uniform compression. Couplings are made of heavy-gauge zinc-plated steel. Prices of aluminum or stainless steel couplings quoted on request.

Gaskets furnished standard in black neoprene. FDA approved white neoprene and a variety of other materials at a slight extra charge, (please specify).

To Prevent Static Electricity Build-up in Bulk Material Conveying Systems, specify Morris Compression Couplings with grounding strips. Be sure to state if your requirements call for aluminum or stainless steel strips. Stainless steel grounding strips are standard, aluminum grounding strips or couplings without grounding strips are available at the same price.

To Eliminate Gasket Wear, or contamination of material flowing through the system lines, specify Couplings with Stainless Steel GASKET PROTECTORS.



Tubing or Nom. Pipe (IPS) Size	Tubing or Pipe O.D.	Coupling Code	Coupling Length	Bolt Count	Weight Each (lbs.)	Black Gasket Part Number	White Gasket Part Number
1/2" Pipe	0.840"	1/2-2C	2"	2	.5	08402BO	08402WO
3/4" Pipe	1.050"	3/4-2C	2"	2	.7	10502BO	10502WO
1" Tubing	1.000"	1-2C-OD	2"	2	1.6	10002BO	10002WO
1" Pipe	1.315"	1-2C	4"	2	1.6	13152BO	13152WO
1 1/4" Tubing	1.250"	1-1/4-2C-OD	4"	2	1.9	12502BO	12502WO
1 1/4" Pipe	1.660"	1-1/4-2C	4"	2	1.8	16602BO	16602WO
	1.660"	1-1/4-3C	6"	3	3.0	16603BO	16603WO
1 1/2" Tubing	1.500"	1-1/2-2C-OD	4"	2	2.0	15002BO	15002WO
	1.500"	1-1/2-3C-OD	6"	3	2.9	15003BO	15003WO
1 1/2" Pipe	1.900"	1-1/2-2C	4"	2	2.0	19002BO	19002WO
	1.900"	1-1/2-3C	6"	3	3.1	19003BO	19003WO
1 3/4" Tubing	1.750"	1-3/4-2C-OD	4"	2	2.1	17502BO	17502WO
	1.750"	1-3/4-3C-OD	6"	3	3.0	17503BO	17503WO
2" Tubing	2.000"	2-2C-OD	4"	2	2.1	20002BO	20002WO
	2.000"	2-3C-OD	6"	3	3.1	20003BO	20003WO
2" Pipe	2.375"	2-2C	4"	2	2.2	23752BO	23752WO
	2.375"	2-3C	6"	3	3.5	23753BO	23753WO
	2.375"	2-4C	8"	4	4.7	23754BO	23754WO



### Compression Couplings

Tubing or Nom. Pipe (IPS) Size	Tubing or Pipe O.D.	Coupling Code	Coupling Length	Bolt Count	Weight Each (lbs)	Black Gasket Part Number	White Gasket Part Number
2 1/8" Tubing	2.125"	2-1/8-2C-OD	4"	2	2.1	21252BO	21252WO
	2.125"	2-1/8-3C-OD	6"	3	3.2	21253BO	21253WO
2 3/16" Tubing	2.187"	2-3/16-2C-OD	4"	2	2.2	21872BO	21872WO
	2.187"	2-3/16-3C-OD	6"	3	3.3	21873BO	21873WO
2 1/4" Tubing	2.250"	2-1/4-2C-OD	4"	2	2.6	22502BO	22502WO
	2.250"	2-1/4-3C-OD	6"	3	3.4	22503BO	22503WO
2 1/2" Tubing	2.500"	2-1/2-2C-OD	4"	2	2.6	25002BO	25002WO
	2.500"	2-1/2-3C-OD	6"	3	3.4	25003BO	25003WO
2 1/2" Pipe	2.875"	2-1/2-2C	4"	2	2.4	28752BO	28752WO
	2.875"	2-1/2-3C	6"	3	3.7	28753BO	28753WO
	2.875"	2-1/2-4C	8"	4	5.0	28754BO	28754WO
2 3/4" Tubing	2.750"	2-3/4-3C-OD	6"	3	3.6	27503BO	28753WO
	3.000"	3-2C-OD	4"	2	3.2	30002BO	30002WO
3" Tubing	3.000"	3-3C-OD	6"	3	4.5	30003BO	30003WO
	3.000"	3-4C-OD	8"	4	5.9	30004BO	30004WO
	3.500"	3-2C	4"	2	3.4	35002BO	35002WO
3" Pipe	3.500"	3-3C	6"	3	5.1	35003BO	35003WO
	3.500"	3-4C	8"	4	6.6	35004BO	35004WO
	3.250"	3-1/4-2C-OD	4"	2	3.5	32502BO	32502WO
3 1/4" Tubing	3.250"	3-1/4-3C-OD	6"	3	5.0	32503BO	32503WO
	3.250"	3-1/4-4C-OD	8"	4	6.5	32504BO	32504WO
	3.500"	3-2C	4"	2	3.4	35002BO	35002WO
3 1/2" Tubing	3.500"	3-3C	6"	3	5.1	35003BO	35003WO
	3.500"	3-4C	8"	4	6.6	35004BO	35004WO
	4.000"	3-1/2-2C	4"	2	3.7	40002BO	40002WO
3 1/2" Pipe	4.000"	3-1/2-3C	6"	3	5.3	40003BO	40003WO
	4.000"	3-1/2-4C	8"	4	7.2	40004BO	40004WO
	3.750"	3-3/4-2C-OD	4"	2	5.6	37502BO	37502WO
3 3/4" Tubing	3.750"	3-3/4-3C-OD	6"	3	7.4	37503BO	37503WO
	4.000"	3-1/2-2C	4"	2	3.7	40002BO	40002WO
4" Tubing	4.000"	3-1/2-3C	6"	3	5.3	40003BO	40003WO
	4.000"	3-1/2-4C	8"	4	7.2	40004BO	40004WO
	4.500"	4-2C	4"	2	3.8	45002BO	45002WO
4" Pipe	4.500"	4-3C	6"	3	5.5	45003BO	45003WO
	4.500"	4-4C	8"	4	7.7	45004BO	45004WO
	4.250"	4-1/4-2C-OD	4"	2	4.2	42502BO	42502WO
4 1/4" Tubing	4.250"	4-1/4-3C-OD	6"	3	6.2	42503BO	42503WO



800-255-6213

### Compression Couplings

Tubing or Nom. Pipe (IPS) Size	Tubing or Pipe O.D.	Coupling Code	Coupling Length	Bolt Count	Weight Each (lbs)	Black Gasket Part Number	White Gasket Part Number
4 1/2" Tubing	4.500"	4-2C	4"	2	3.8	45002BO	45002WO
	4.500"	4-3C	6"	3	5.5	45003BO	45003WO
	4.500"	4-4C	8"	4	7.7	45004BO	45004WO
4 1/2" Pipe	5.000"	4-1/2-2C	4"	2	4.2	50002BO	50002WO
	5.000"	4-1/2-3C	6"	3	6.2	50003BO	50003WO
	5.000"	4-1/2-4C	8"	4	8.1	50004BO	50004WO
4 3/4" Tubing	4.750"	4-3/4-3C-OD	4"	3	6.5	47503BO	47503WO
	4.750"	4-3/4-4C-OD	6"	4	8.6	47504BO	47504WO
5" Tubing	5.000"	4-1/2-2C	4"	2	4.2	50002BO	50002WO
	5.000"	4-1/2-3C	6"	3	6.2	50003BO	50003WO
	5.000"	4-1/2-4C	8"	4	8.1	50004BO	50004WO
5" Pipe	5.563"	5-2C	4"	2	4.6	55632BO	55632WO
	5.563"	5-3C	6"	3	6.8	55633BO	55633WO
	5.563"	5-4C	8"	4	8.8	55634BO	55634WO
5 1/4" Tubing	5.250"	5-1/4-3C-OD	6"	3	6.6	52503BO	52503WO
5 1/2" Tubing	5.500"	5-1/2-3C-OD	6"	3	6.8	55003BO	55003WO
	5.500"	5-1/2-4C-OD	8"	4	9.0	55004BO	55004WO
5 3/4" Tubing	5.750"	5-3/4-3C-OD	6"	3	7.8	57503BO	57503WO
	5.750"	5-3/4-4C-OD	8"	4	9.2	57504BO	57504WO
6" Tubing	6.000"	6-2C-OD	4"	2	4.7	60002BO	60002WO
	6.000"	6-3C-OD	6"	3	7.0	60003BO	60003WO
	6.000"	6-4C-OD	8"	4	9.4	60004BO	60004WO
	6.000"	6-5C-OD	10"	5	11.8	60005BO	60005WO
6" Pipe	6.625"	6-2C	4"	2	5.3	66252BO	66252WO
	6.625"	6-3C	6"	3	7.8	66253BO	66253WO
	6.625"	6-4C	8"	4	10.4	66254BO	66254WO
	6.625"	6-5C	10"	5	14.3	66255BO	66255WO
6 1/4" Tubing	6.250"	6-1/4-3C-OD	6"	3	7.3	62503BO	62503WO
	6.250"	6-1/4-4C-OD	8"	4	10.0	62504BO	62504WO
6 1/2" Tubing	6.500"	6-1/2-3C-OD	6"	3	7.5	65003BO	65003WO
	6.500"	6-1/2-4C-OD	8"	4	10.4	65004BO	65004WO
6 3/4" Tubing	6.750"	6-3/4-3C-OD	6"	3	7.7	67503BO	67503WO
	6.750"	6-3/4-4C-OD	8"	4	10.8	67504BO	67504WO
7" Tubing	7.000"	7-3C-OD	6"	3	7.9	70003BO	70003WO
	7.000"	7-4C-OD	8"	4	10.8	70004BO	70004WO
	7.000"	7-5C-OD	10"	5	13.7	70005BO	70005WO
7 1/4" Tubing	7.250"	7-1/4-3C-OD	6"	3	8.3	72503BO	72503WO



### Compression Couplings

Tubing or Nom. Pipe (IPS) Size	Tubing or Pipe O.D.	Coupling Code	Coupling Length	Bolt Count	Weight Each (lbs)	Black Gasket Part Number	White Gasket Part Number
7 1/2" Tubing	7.500"	7-1/2-3C-OD	6"	3	8.5	75003BO	75003WO
	7.500"	7-1/2-4C-OD	8"	4	11.3	75004BO	75004WO
7 3/4" Tubing	7.750"	7-3/4-3C-OD	6"	3	8.9	77503BO	77503WO
8" Tubing	8.000"	8-2C-OD	6"	2	11.0	80002BO	80002WO
	8.000"	8-3C-OD	8"	3	14.3	80003BO	80003WO
	8.000"	8-4C-OD	10"	4	18.0	80004BO	80004WO
	8.000"	8-5C-OD	12"	5	22.0	80005BO	80005WO
8" Pipe	8.625"	8-2C	6"	2	11.5	86252BO	86252WO
	8.625"	8-3C	8"	3	14.6	86253BO	86253WO
	8.625"	8-4C	10"	4	18.8	86254BO	86254WO
	8.625"	8-5C	12"	5	23.0	86255BO	86255WO
9" Tubing	9.000"	9-3C-OD	8"	3	15.9	90003BO	90003WO
	9.000"	9-4C-OD	10"	4	19.9	90004BO	90004WO
10" Tubing	10.000"	10-3C-OD	8"	3	17.5	100003BO	100003WO
	10.000"	10-4C-OD	10"	4	21.8	100004BO	100004WO
	10.000"	10-5C-OD	12"	5	26.1	100005BO	100005WO
10" Pipe	10.750"	10-3C	8"	3	16.4	107503BO	107503WO
	10.750"	10-4C	10"	4	20.3	107504BO	107504WO
	10.750"	10-5C	12"	5	25.2	107505BO	107505WO
12" Tubing	12.000"	12-3C-OD	8"	3	20.4	120003BO	120003WO
	12.000"	12-4C-OD	10"	4	25.5	120004BO	120004WO
	12.000"	12-5C-OD	12"	5	30.2	120005BO	120005WO
12" Pipe	12.750"	12-3C	8"	3	18.7	127503BO	127503WO
	12.750"	12-4C	10"	4	23.3	127504BO	127504WO
	12.750"	12-5C	12"	5	28.1	127505BO	127505WO
13" Tubing	13.000"	13-xC-OD	PLEASE CALL FOR DETAILS		13000xBO	13000xWO	
14"	14.000"	14-xC-OD	PLEASE CALL FOR DETAILS		14000xBO	14000xWO	
15"	15.000"	15-xC-OD	PLEASE CALL FOR DETAILS		15000xBO	15000xWO	
16"	16.000"	16-xC-OD	PLEASE CALL FOR DETAILS		16000xBO	16000xWO	
17"	17.000"	17-xC-OD	PLEASE CALL FOR DETAILS		17000xBO	17000xWO	
18"	18.000"	18-xC-OD	PLEASE CALL FOR DETAILS		18000xBO	18000xWO	
19"	19.000"	19-xC-OD	PLEASE CALL FOR DETAILS		19000xBO	19000xWO	
20"	20.000"	20-xC-OD	PLEASE CALL FOR DETAILS		20000xBO	20000xWO	
21"	21.000"	21-xC-OD	PLEASE CALL FOR DETAILS		21000xBO	21000xWO	
22"	22.000"	22-xC-OD	PLEASE CALL FOR DETAILS		22000xBO	22000xWO	
23"	23.000"	23-xC-OD	PLEASE CALL FOR DETAILS		23000xBO	23000xWO	
24"	24.000"	24-xC-OD	PLEASE CALL FOR DETAILS		24000xBO	24000xWO	

# Quickon II Compression Couplings



Quickon II Couplings for pneumatic or vacuum conveying systems can be installed or removed with the twist of the wrist. No tools or special skills needed. The positive-locking system turns easily to seal or to compensate for normal O.D. pipe or tubing tolerances.

This in-line coupler is ideal for use where fast takedown and reassembly of lines is essential, reduced coupler weight is desirable, a line or system is frequently modified or wrap around installation is necessary.

Quickon II Single Handle			
O.D. Size	Code No.	Weight (lbs)	Part No.
1.500"	1501	.58	Q1500F1
1.660"	1661	.60	Q1660F1
1.750"	1751	.62	Q1750F1
1.900"	1901	.65	Q1900F1
2.000"	2001	.68	Q2000F1
2.125"	2121	.70	Q2125F1
2.250"	2251	.71	Q2250F1
2.375"	2371	.74	Q2375F1
2.500"	2501	.77	Q2500F1
2.750"	2751	.80	Q2750F1
2.875"	2871	.84	Q2875F1
3.000"	3001	.88	Q3000F1
3.250"	3251	.97	Q3250F1
3.500"	3501	1.06	Q3500F1
3.750"	3751	1.15	Q3750F1
4.000"	4001	1.25	Q4000F1
4.250"	4251	1.32	Q4250F1
4.500"	4501	1.40	Q4500F1
5.000"	5001	1.55	Q5000F1
5.563"	5561	1.63	Q5563F1
6.000"	6001	1.72	Q6000F1
6.250"	6251	1.78	Q6250F1
6.625"	6621	1.82	Q6625F1
8.000"	8001	2.25	Q8000F1
8.625"	8621	2.38	Q8625F1
9.000"	9001	2.45	Q9000F1
10.000"	10001	2.65	Q10000F1

Quickon II Dual Handle		
O.D. Size	Code No.	Part No.
4.000"	2-4001	Q4000F2
4.500"	2-4501	Q4500F2
5.000"	2-5001	Q5000F2
6.000"	2-6001	Q6000F2
6.625"	2-6621	Q6625F2
8.000"	2-8001	Q8000F2
8.625"	2-8621	Q8625F2
10.000"	2-10001	Q10000F2
10.750"	2-10751	Q10750F2
12.000"	2-12001	Q12000F2
12.750"	2-12751	Q12750F2

**Specifications:**

All Stainless Steel construction including band, strike plate, handle screw and yoke. Gasket is abrasion resistant gum rubber and attached to band. Static conducting grounding strip included on request.

Order by O.D. size, Code No., and Gasket

Sizes not shown may be available by request.

Standard length for single handle coupling is 4".  
Standard length for double handle coupling is 9 1/2".



# Gripper Compression Couplings



The Gripper Coupling was designed as a quick coupler for dry, bulk transport, tank tubing. This unique coupling just slides onto tubing or wraps around it and is tightened by hand in seconds but provides better support than rubber hose and band clamps.

The Grippers positive sealing gum gaskets allow for tube and pipe variations. And, because it's made of 100% stainless steel, it will not corrode due to harsh weather or road conditions. Silicone gaskets that comply with applicable FDA requirements are available upon request.

Single Wingnut Coupler			
O.D. Size	Code No.	Weight (lbs)	Part No.
1.500"	1501	.58	G1500F1
1.660"	1661	.60	G1660F1
1.750"	1751	.62	G1750F1
1.900"	1901	.65	G1900F1
2.000"	2001	.68	G2000F1
2.125"	2121	.70	G2125F1
2.250"	2251	.71	G2250F1
2.375"	2371	.74	G2375F1
2.500"	2501	.77	G2500F1
2.750"	2751	.80	G2750F1
2.875"	2871	.84	G2875F1
3.000"	3001	.88	G3000F1
3.250"	3251	.97	G3250F1
3.500"	3501	1.06	G3500F1
3.750"	3751	1.15	G3750F1
4.000"	4001	1.25	G4000F1
4.250"	4251	1.32	G4250F1
4.500"	4501	1.40	G4500F1
5.000"	5001	1.55	G5000F1
5.563"	5561	1.63	G5563F1
6.000"	6001	1.72	G6000F1
6.250"	6251	1.78	G6250F1
6.625"	6621	1.82	G6625F1
8.000"	8001	2.25	G8000F1
8.625"	8621	2.38	G8625F1
9.000"	9001	2.45	G9000F1
10.000"	10001	2.65	G10000F1

Double Wingnut Coupler		
O.D. Size	Code No.	Part No.
4.000"	2-4001	G4000F2
4.500"	2-4501	G4500F2
5.000"	2-5001	G5000F2
6.000"	2-6001	G6000F2
6.625"	2-6621	G6625F2
8.000"	2-8001	G8000F2
8.625"	2-8621	G8625F2
10.000"	2-10001	G10000F2
10.750"	2-10751	G10750F2
12.000"	2-12001	G12000F2
12.750"	2-12751	G12750F2

**Specifications:**

All Stainless Steel construction. Gasket is abrasion resistant gum rubber.

Order by O.D. size, Code No., and Gasket

Sizes not shown may be available by request.

Standard length for single wingnut coupling is 4".  
Standard length for double wingnut coupling is 9 1/2".





# Side-Band Compression Couplings



Unique design of Morris Side-Band Compression Couplings gives you vastly improved axial-force holding power to connect or repair threaded or unthreaded pipe and tubing.

Dual-locking side bands grip the pipes and allow higher operating pressures than those normally suggested for standard Morris compression couplings. Especially effective where line vibration is a problem, and on plastic pipe. You get all the positive sealing advantages of the Morris compression coupling in a coupling that can hold its own in fighting end pull.

Available for 1-1/2" through 24" nominal pipe or tubing sizes, including millimeter sizes. Static grounding strips or stainless steel gasket protectors also available.

Tubing or Pipe O.D.	Coupling Code	Weight Each (lbs.)	Black Gasket Part Number	White Gasket Part Number
1.500"	1-1/2-3C-OD-SB	7.0	15003BOSB	15003WOSB
2.000"	2-3C-OD-SB	7.3	20003BOSB	20003WOSB
2.375"	2-3C-SB	7.7	23753BOSB	23753WOSB
2.500"	2-1/2-3C-OD-SB	8.1	25003BOSB	25003WOSB
2.875"	2-1/2-3C-SB	8.7	28753BOSB	28753WOSB
3.000"	3-3C-OD-SB	9.2	30003BOSB	30003WOSB
	3-4C-OD-SB	10.1	30004BOSB	30004WOSB
3.500"	3-3C-SB	9.8	35003BOSB	35003WOSB
	3-4C-SB	10.7	35004BOSB	35004WOSB
4.000"	3-1/2-3C-SB	10.3	40003BOSB	40003WOSB
	3-1/2-4C-SB	12.9	40004BOSB	40004WOSB
4.500"	4-3C-SB	10.7	45003BOSB	45003WOSB
	4-4C-SB	13.4	45004BOSB	45004WOSB
5.000"	4-1/2-3C-SB	11.4	50003BOSB	50003WOSB
	4-1/2-4C-SB	14.1	50004BOSB	50004WOSB
5.563"	5-3C-SB	12.3	55633BOSB	55633WOSB
	5-4C-SB	15.0	55634BOSB	55634WOSB

Tubing or Pipe O.D.	Coupling Code	Weight Each	Black Gasket Part Number	White Gasket Part Number
6.000"	6-3C-OD-SB	12.5	60003BOSB	60003WOSB
	6-4C-OD-SB	15.6	60004BOSB	60004WOSB
6.625"	6-3C-SB	13.5	66253BOSB	66254WOSB
	6-4C-SB	16.9	66254BOSB	66254WOSB
8.000"	8-3C-OD-SB	24.8	80003BOSB	80003WOSB
	8-4C-OD-SB	28.5	80004BOSB	80004WOSB
8.625"	8-3C-SB	25.6	86253BOSB	86253WOSB
	8-4C-SB	29.8	86254BOSB	86254WOSB
10.000"	10-3C-OD-SB	29.2	100003BOSB	100003WOSB
	10-4C-OD-SB	33.5	100004BOSB	100004WOSB
10.750"	10-3C-SB	28.1	107503BOSB	107503WOSB
	10-4C-SB	32.0	107504BOSB	107504WOSB
12.000"	12-3C-OD-SB	32.1	120003BOSB	120003WOSB
	12-4C-OD-SB	37.0	120004BOSB	120004WOSB
12.750"	12-3C-SB	32.7	127503BOSB	127503WOSB
	12-4C-SB	37.9	127504BOSB	127504WOSB

Coupling gaskets are white or black neoprene unless other specified. Many different gasket materials are available upon request.

Order by O.D. size, Code No., and Gasket

Sizes not shown may be available by request.

Standard length for side-band couplings, add 8" to standard coupling length.



# Sight Glass

ChaDa Sales sight glasses allow you a clear look at the material flowing in your application. Sight glasses are constructed with tubing or pipe inserted into Cast Acrylic and offer a smooth "straight through" interior and air tight seal. Comes equipped with a permanently attached grounding strip. Pyrex is also available upon request.



Tubing Sizes with Aluminum Ends				
Part No.	Tube Thickness	Overall OD	Tube OD	Tube ID
S1500A16	16ga	1.750"	1.500"	1.375"
S2000A16	16ga	2.250"	2.000"	1.875"
S2000A11	11ga	2.250"	2.000"	1.750"
S2250A16	16ga	2.500"	2.250"	2.125"
S2500A16	16ga	2.750"	2.500"	2.375"
S2500A11	11ga	2.750"	2.500"	2.250"
S3000A16	16ga	3.250"	3.000"	2.875"
S3000A11	11ga	3.250"	3.000"	2.750"
S3500A16	16ga	3.750"	3.500"	3.375"
S3500A11	11ga	3.750"	3.500"	3.250"
S4000A16	16ga	4.250"	4.000"	3.875"
S4000A11	11ga	4.250"	4.000"	3.750"
S4500A16	16ga	4.750"	4.500"	4.375"
S4500A11	11ga	4.750"	4.500"	4.250"
S5000A14	14ga	5.250"	5.000"	4.875"
S5000A11	11ga	5.250"	5.000"	4.750"
S6000A11	11ga	6.500"	6.000"	5.750"

Pipe Sizes with Sch40 Steel Ends			
Part No.	Overall OD	Tube OD	Tube ID
S2375C40	2.500"	2.375"	2.000"
S2875C40	3.000"	2.875"	2.500"
S3500C40	3.500"	3.250"	3.000"
S4000C40	4.000"	3.750"	3.500"
S4500C40	4.500"	4.250"	4.000"
S5563C40	5.563"	5.250"	5.000"
S6625C40	6.625"	6.500"	6.000"

Pipe Sizes with Sch40 Aluminum Ends			
Part No.	Overall OD	Tube OD	Tube ID
S2375A40	2.500"	2.375"	2.000"
S2875A40	3.000"	2.875"	2.500"
S3500A40	3.500"	3.250"	3.000"
S4000A40	4.000"	3.750"	3.500"
S4500A40	4.500"	4.250"	4.000"
S5563A40	5.563"	5.250"	5.000"
S6625A40	6.625"	6.500"	6.000"

Material:  
 Aluminum Tubing & Pipe 6061-T6 and 6063-T6  
 Sight Portion Cast Acrylic Resin  
 Steel Pipe Schedule 40 Carbon Steel

Standard Overall Length = 16"  
 Sight Portion Length = 7"  
 Standard Tangent Length = 3"  
 Specialized lengths available by request

Many more sizes and materials, including Pyrex, available on request.